

# **The Benjamin Franklin Classical Charter Public School**

2007 – 2008

## **Annual Report**

**Kevin O'Malley, Ed.D**

Head of School

201 Main Street

Franklin, MA 02038

508-541-3434

[www.bfccps.org](http://www.bfccps.org)

## Table of Contents

1.	School Contact Information .....	3
2.	Introductory Description of the School .....	3
3.	Letter from Board of Trustee's Chair.....	4
5.	Mission Statement .....	5
6.	Summary of Educational Philosophy .....	5 - 7
7.	Summary of Performance Relative to Accountability Plan Goals	7 - 24
10.	Number of Instructional Days for the 2008-2008 School Year ....	24
11.	List of Members of the Board of Trustees .....	25
12.	Summary of Major Policy Decisions made by the Board of Trustees .....	26-28
13.	Charter Amendments Approved by the Commissioner or the Board of Elementary and Secondary Education .....	29
14.	Summary of Official Complaints received by the Board of Trustees.....	29
15.	Student Demographics.....	29-30
16.	Total Number of Student Applications Received .....	30-31
17.	Student Attrition Data .....	31
18.	Number of Students Who Have Been Expelled and Who Have Served In-School and Out of School Suspensions.....	32
19.	Name of School Administrators and Organizational Chart.....	32
20.	Summary of Classroom Teacher Qualifications .....	33
21.	Teacher Attrition.....	33
22.	Fiscal Year 2008 Statement of Revenues Expenses and Changes in Net Assets (Income Statement) .....	34
23.	Fiscal Year 2008 Statement of Net Assets (Balance Sheet).....	34-36
24.	Fiscal year 2009 approved School Budget.....	36-38
25.	Plans for Dissemination of Best Practices or Current Dissemination Projects.....	38-40
26.	NCLB Report Card.....	40

**1. School Contact Information:**

The Benjamin Franklin Classical Charter Public School  
201 Main Street  
Franklin, MA 02038

Telephone: 508 - 541- 3434  
Fax: 508 - 541- 5396  
E-mail: BFCCPS.org  
Web: [www.bfccps.org](http://www.bfccps.org)

Kevin O'Malley, Ed. D.  
Head of School  
[komalley@bfccps.org](mailto:komalley@bfccps.org)

Heather Zolnowski, M.Ed  
Assistant Head of School  
[hzolnowski@bfccps.org](mailto:hzolnowski@bfccps.org)

**2. Introductory Description of the School:**

The Benjamin Franklin Classical Charter Public School (BFCCPS) opened in 1995 with 150 students in grades K-4. The school added a grade each year until it arrived at its current enrollment of 395 students in grades K-8. BFCCPS can enroll a maximum of 425 students. BFCCPS has just completed its thirteenth year of operation. The school is located in a former Catholic Parish School in Franklin, MA.

The demographic makeup of the current student body is 1.0% African American; 12.0% Asian; 0.0% Hispanic; 0.0% Native American; 85% Caucasian; and 2.0% Multi-Race Non-Hispanic. The school has a low income population of 2.0% and a Special Education population of 8.8%. BFCCPS recruits students from Franklin and neighboring districts.

### **3. Letter from the Chair of the Board:**

I am pleased to present to you the 2007-2008 Annual Report for BFCCPS and provide a brief overview of some of the accomplishments of the School and the Board of Trustees over the last twelve months.

- We continued our recognition of the month program at the Board meetings and have welcomed our new teachers and students from Aladdin Jr. to Best of 2007 Contest to Central District Band/Chorus/Orchestra to Character Education to French Week to Lego League to Rube Goldberg. What a delight to listen to these students every month as representatives of all of our students at the School.
- The Board received a tutorial on the Massachusetts Online Network for Education; had an orientation session for new members; hired a new legal counsel; met with Mass Development to discuss funding options for a new school; established an Enrollment Task Force to identify all of the issues that relate to the recruitment and retention of our students; approved the selection of the Holt Think Math and Holt Middle School Math Program; met with the Franklin School Committee to discuss common educational issues; approved a salary increase for the Faculty and Staff for each of the next three years; received a grant from Putnam Investments; has a new school brochure from the Public Relations Committee; and raised \$20,750 in the Annual Appeal.
- The School had a successful DOE Site Visit; has a new mentoring program for teachers; has a math specialist; extended Latin to Grades 3 and 4; has a new school sign; presented at the Journee de la Francophonie at Milton High School; had a school-wide celebration for Madame Malouf and her husband who became American citizens; was named one of the 100 best communities for music education by the NAMM Foundation; welcomed Town Administrator Jeff Nutting, Fire Chief Gary McCarraher and Police Officer Dan MacLean for Read Across America Day; and continues to have a myriad of educational field trips for the students that this year included a tour of the White House.
- The Faculty Input Team and the Research Action Teams have been a striking example of teacher leadership and their work to forge collaborative decisions on issues that affect the staff and the school including character education, collegial interaction amongst staff, discipline, lunch and recess procedures and salary issues.
- The Board continues with our responsibility to Governance issues and this year reviewed over 60% of the Policies for necessary revisions.

Thank you to our retiring Board members Jennifer Moccia, Michele Pearl and Faculty Representative Kevin Buckley; to Debra Gebhardt and Angel Lee who are leaving us much too soon; to Ronnie Cacciola and Edith Whitney who are retiring; and welcome to our new Board members. And I must also take this opportunity to thank Dr. O'Malley and the wonderful faculty, staff, students and parents who have been a delight to work with. Thank you for being with us at BFCCPS. We do extraordinary things together!

John H. Neas

For the Board of Trustees

## 5. **School Mission Statement:**

“To assist parents in their role as primary educators of their children by providing the children with a classical academic education coupled with sound character development and opportunities for community service.”

## 6. **Summary of Educational Philosophy:**

The Benjamin Franklin Classical Charter Public School was founded on four pillars: Classical Education, Parents as Primary Educators, Community Service and Character Education and often integrated creating an education of the whole child.

### ***The Core Knowledge Sequence:***

At BFCCPS, we promote a curriculum that honors inquiry and exploration through interdisciplinary studies and projects. Our curriculum, based on E.D. Hirsch Jr.'s Core Knowledge Sequence (CK) is coupled with the Massachusetts Curriculum Frameworks (MCF) resulting in the blend of the two curricula. We call this blending an enriched frameworks curriculum.

In today's educational world there is much conversation about the effect of standardized tests on teaching methods, with many fearing that creative education may be abandoned in the quest for strong test scores. BFCCPS proves to be an important example in this dialogue. We promote excellent test scores and creative teaching, relying on projects, exploration, and interdisciplinary studies.

The Core Knowledge Sequence based on the work of E.D. Hirsch Jr. which emphasizes a classical academic curriculum in which topics spiral so that students can revisit them, ensuring that students develop a basis for learning what educated people should know. There is also an emphasis on learning art history and music history. In addition, the sequence includes and invites a look at the diverse peoples and ideas that both comprise and have shaped the world in which we live.

E.D. Hirsch Jr. reminds educators that the Core Knowledge Sequence is a curriculum and not a method of teaching. BFCCPS prides itself on integrating subjects and on providing a hands-on, project-based curriculum. Although information and ideas are very important for children to learn, we believe that information is both better retained and understood when students are engaged in active learning. Examples of this active learning include students learning about immigration by visiting an immigration museum, writing a journal about an immigrant experience and writing plays to act out different scenes from history. In science students grow plants when learning about genetics; build cars when learning about physics; design models of the solar system; and create scaled time-lines of life of geological eras.

There are also many examples of integration across the curriculum. Students study Jazz when they study 20th century American History. They study Greek and Roman architecture when studying about Greece and Rome. When studying astronomy, they learn the myths behind the names of the constellations and planets; Latin students share their interpretations of astronomy projects with other classes. Students read storybooks which are based on math challenges or puzzles.

In addition to the Core Knowledge Sequence, students begin French instruction in kindergarten and Latin in the third grade. Physical Education, Music, and Art instruction is delivered kindergarten through eighth grade.

All students start the recorder in the third grade and students can select a musical instrument in the fourth grade. Ninety percent of the students in grades 4 - 8 took music lessons at school and were in one of the school's five performance bands: Concert Band, Wind Ensemble, Symphonic Band, Jazz Ensemble, and Marching Band. The bands performed at the Franklin Memorial Day Parade, and at assemblies. Both the Symphonic Band and the Chorus received gold medals at the Music in the Parks competition, and participated in Central District ensembles. BFCCPS had the honor of being named one of the top 100 communities for music education by the NAMM foundation.

Students in grades 6 -8 participate in a Fine Arts Elective Program. Students choose from an array of double period specialty courses including dance, guitar, Photoshop, jazz band, drawing, sculpture, drama, chorus, and technology programs.

### ***Character Development:***

The school teaches character education by weaving character development into every part of the curriculum, answering questions such as: What are the ethical implications of science research?; What character strengths did Woodrow Wilson or Franklin Roosevelt demonstrate?; What character traits are characters in a novel displaying?; How do you treat fellow students?; How would you want to be treated?

We believe that children learn from what they see around them, and we shape a community of adults who demonstrate good character, and model the virtues we hope our students will embody. Character education instruction at BFCCPS is based on the four classical virtues: Justice, Temperance, Fortitude, and Prudence. Each month we focus on one virtue.

Each month grades K - 4 hold a "Forest of Virtue" assembly in which individuals are celebrated for demonstrating one of the virtues. In grades 6-8 students are divided into advising groups for small group character education instruction.

### ***Community Service:***

Students in all grades perform community service. Scaffolding on experiences beginning in Kindergarten there is an increasingly large circle in which students perform community service: their classrooms, their school, their local community, and the broader world community. Through community service students build self-esteem, recognize that they are members of larger communities, and exhibit good character.

### ***Parents as Primary Educators:***

At BFCCPS we support the idea that parents shape their children's attitudes toward school and learning. We ask that parents continue the work of school at home by enriching and assisting student's work as needed. BFCCPS takes several initiatives to support parents, including: dissemination of grader books K-6, distribution of monthly Scope and Sequence outlining what will be covered in all subject areas, and publishing

*The Courant*, the school newsletter in which each teacher writes about one aspect of the curriculum.

**7. Summary of Performance Relative to Accountability Plan Goals:**

**Excerpted** from The Benjamin Franklin Classical Charter Public School’s 2005 – 2010 focusing on two questions: Is the school’s academic program a success?; and, Is the school faithful to the terms of its charter?

**I. Is the Academic Program a Success?**

External Measures:

- MCAS
- Terra Nova – Reading, Language Arts and Math
- ERB
- National Latin Exam
- Le Grand Concourse Exam (French)
- AYP reports

The BFCCPS Charter was renewed in January 2005. We administer the ERB’s in the fall and the Terra Nova second edition/ CAT in the spring. We, also, make use of the data to inform and improve instruction, not just to measure student and school achievement.

**Performance Objective 1:** All students at BFCCPS will demonstrate competency in skills fundamental to academic success in English language arts and mathematics.

**Annual Yearly Progress (AYP):**

- BFCCPS will make AYP in the aggregate and for all statistically significant sub-groups.

**Adequate Yearly Progress (AYP) History:**

As indicated in the summary\* of our AYP provided by the DOE, we have met our AYP in every year.

		Adequate Yearly Progress History									NCLB Accountability Status
		1999	2000	2001	2002	2003	2004	2005	2006	2007	
ELA	Aggregate	Yes	Yes	Yes	Yes	Yes	Yes	Yes	Yes	Yes	No Status
	All Subgroups	-	-	-	-	Yes	Yes	Yes	Yes	Yes	
MATH	Aggregate	Yes	Yes	Yes	Yes	Yes	Yes	Yes	Yes	Yes	No Status

\*(taken directly from the MA DOE website)

- **MCAS:** 85% of students in grade levels assessed by the MCAS will achieve Proficient or Advanced in Math and ELA
- **ERB:** 85% of fourth through eighth grade students will meet or exceed grade level criteria on the ERB
- **Terra Nova Cat 6:** 85% of first and second grade students will meet or exceed the 75<sup>th</sup> percentile (MDNP Median National Percentile) in Reading/Language Arts on the Terra Nova CAT 6
- **Terra Nova Cat 6:** 85% of first and second grade students will meet or exceed the 75<sup>th</sup> percentile (MDNP Median National Percentile) in total Math on the Terra Nova CAT 6

**MCAS:**

When interpreting MCAS results keep in mind, BFCCPS is a small school with relative few students in each grade compared to most other schools.

**Overall Ranking:**

These results for Benjamin Franklin Classical Charter School, released in September and October of 2007, are for the MCAS exams taken in the spring of 2007. Source: Massachusetts Department of Education.

**Note:** "Placement overall" ranks schools by combining the percentage of students who were either "Advanced" or "Proficient" and comparing that number for each subject and grade with schools across the state. *The ranking was done by Boston.com.*

Grade/ Subject	% Adv	% Prof	%Adv + Prof	State % Adv+Prof	% Needs Improving	% Warning/Failing	Students Tested	Placement Overall
3 <sup>rd</sup> Reading	34	60	94	59	6	0	47	10 of 1013
3 <sup>rd</sup> Math	30	53	83	60	15	2	47	97 of 1013
4 <sup>th</sup> English	13	72	85	56	15	0	46	52 of 996
4 <sup>th</sup> Math	39	37	76	48	24	0	46	55 of 996
5 <sup>th</sup> English	17	63	80	63	10	10	48	175 of 929
5 <sup>th</sup> Math	28	38	66	51	26	9	47	210 of 929
5 <sup>th</sup> Science	32	47	79	51	19	2	47	75 of 929
6 <sup>th</sup> English	31	62	93	67	5	2	42	14 of 565
6 <sup>th</sup> Math	36	40	76	52	14	10	42	69 of 565
7 <sup>th</sup> English	9	76	85	69	13	2	45	98 of 464
7 <sup>th</sup> Math	31	29	60	46	16	24	45	110 of 464
8 <sup>th</sup> English	29	68	97	75	4	0	28	7 of 462
8 <sup>th</sup> Math	46	25	71	69	25	4	28	55 of 461
8 <sup>th</sup> Science	7	75	82	33	18	0	28	1 of 462

## Longitudinal Reporting of BFCCPS Results Over Three Years:

**Table of Longitudinal Class Trends in MCAS Performance**

Year MCAS Taken	2005	2006	2007
<b>Class of '08 Eighth Grade</b>	Tested only in Science and Technology <b>5<sup>th</sup> Grade</b>	ELA:87% Math: 65% <b>6<sup>th</sup> Grade</b>	ELA:85% Math: 62% <b>7<sup>th</sup> Grade</b>
<b>Class of '09 Seventh Grade</b>	ELA: 86% Math: 80% <b>4<sup>th</sup> Grade</b>	ELA: 90% Math: 62% <b>5<sup>th</sup> Grade</b>	ELA: 95% Math:79% <b>6<sup>th</sup> Grade</b>
<b>Class of '10 Sixth Grade</b>	Reading: 76% <b>3<sup>rd</sup> Grade</b>	ELA: 65% Math: 55% <b>4<sup>th</sup> Grade</b>	ELA:83% Math: 76% <b>5<sup>th</sup> Grade</b>
<b>Class of '11 Fifth Grade</b>		R: 75% Math: 59% <b>3<sup>rd</sup> Grade</b>	ELA: 85% M: 76% <b>4<sup>th</sup> Grade</b>
<b>Class of '12 Fourth Grade</b>			ELA: 94% Math: 83% <b>3<sup>rd</sup> Grade</b>

- ELA – English Language Arts
- M – Math
- R – Reading
- S&T – Science & Technology

### Responses to MCAS Results

#### Response ELA:

- Our Reading Specialist has analyzed individual student MCAS data, identified weaknesses and is providing instructional support based on the analysis to teachers and students in K – 4.
- Teachers are analyzing test data for areas or trends that need addressing.
- Sample MCAS tests were administered.
- DIBELS testing is administered three times a year. Data derived from this is used to inform and improve our reading instruction in grades K-5.
- Identified need for research and implementation of updated ELA curriculum

#### Response Math:

- Teachers analyzed test data for areas or trends that need addressing.
- Sample MCAS Tests were administered.
- A math specialist addressed needs in all grades and provided faculty and students with instructional support.
- Before and after school math support sessions were made available.

- Researched and began implementation of new math curriculum to achieve a closer alignment with the MCF.
- Prioritized professional development funds for math workshops and training.

**Response Science:**

- Increased scheduled Science periods in grades K-4.
- K – 8 Faculty implemented Science benchmarks aligned with MA frameworks.
- Benchmarks; Grade 2 continues with aligning Core Knowledge with Massachusetts

**ERB Writing Exam**

The scores for this test are reported in two ways:

- First, for each of the criteria explained above, a score from 1 - 6 is given, with one the lowest and six the highest. These raw scores for grade 4 is measured against a 4<sup>th</sup> grade standard, grades 5 and 6 are based on a standard for the 6<sup>th</sup> grade (Level 1), and raw scores for grades 7 and 8 are based on a standard set for the 8<sup>th</sup> grade (Level 2).
- Second, these raw scores are then translated (scaled) into grade level performance scores. To achieve mastery of grade level expectations, students need, minimally, to have the following scaled scores for each grade:

**ERB Data**

**Scaled Score Goal: 400.0**

Grade 4	Overall Development	Organization	Support	Sentence Structure	Word Choice	Mechanics	Scaled Score
05-06	4.5	4.7	4.5	4.2	4.4	4.2	471.0
06-07	4.5	4.6	4.6	4.0	4.4	4.1	480.0
07-08	4.3	4.6	4.3	4.0	4.3	4.0	456.0

**Grade 4: 34 out of 46 students or 74% met goal.**

**Scaled Score Goal: 500.0**

Grade 5	Overall Development	Organization	Support	Sentence Structure	Word Choice	Mechanics	Scaled Score
05-06	3.8	3.9	3.8	3.8	3.9	3.7	600.0
06-07	3.4	3.7	3.2	3.5	3.7	3.6	535.0
07-08	3.7	3.8	3.4	3.6	3.9	3.8	569.0

**Grade 5: 34 out of 48 students or 71% met goal.**

**Scaled Score Goal: 600.0**

Grade 6	Overall Development	Organization	Support	Sentence Structure	Word Choice	Mechanics	Scaled Score
05-06	4.5	4.4	4.4	4.4	4.4	4.2	679.0
06-07	4.0	4.1	3.9	3.8	4.2	4.0	618.0
07-08	3.6	3.8	3.4	3.6	3.8	3.8	565.0

**Grade 6: 27 out of 46 students or 59% met goal.**

**Scaled Score Goal: 700.0**

Grade 7	Overall Development	Organization	Support	Sentence Structure	Word Choice	Mechanics	Scaled Score
05-06	4.0	4.3	3.8	4.0	4.2	4.0	821.0
06-07	3.9	4.1	3.7	3.9	3.9	3.9	794.0
07-08	3.6	3.7	3.4	3.5	3.7	3.6	727.0

**Grade 7: 25 out of 38 students or 66% met goal.**

**Scaled Score Goal: 800.0**

Grade 8	Overall Development	Organization	Support	Sentence Structure	Word Choice	Mechanics	Scaled Score
05-06	4.2	4.2	4.0	4.1	4.1	4.2	854.0
06-07	4.1	4.2	3.9	4.0	4.1	3.0	825.0
<b>07-08</b>	3.5	3.7	3.4	3.6	3.7	3.6	700.9

**Grade 8: 13 out of 34 students or 38% met goal.**

**Terra Nova CAT Complete Battery:**

Testing battery includes an integrated Reading /Language Arts as well as mathematics for grades 1& 2.. Testing is scheduled for May to coincide with MCAS testing.

**Terra Nova Scores Relative to the Median National Percentile**

Grade	# of students	% of students at or above 85 % Reading	Average MDNP	% of students at or above 85 % Math	Average MDNP
1	44	74.7%	89.0	70.9%	85.0
2	43	70.9%	88.3	68.3%	80.0

**Terra Nova CAT Reading (regular conditions)**

Grade	Oct 05	Oct 06	May 08
1	84.0	89.0	78.5
2	85.7	88.3	84.4
<b>Mean</b>	<b>84.85</b>	<b>83.65</b>	<b>81.45</b>

**Terra Nova CAT Math (regular conditions)**

Grade	Oct 05	Oct 06	May 08
1	84.0	85.0	88.5
2	83.0	80.0	82.0
<b>Mean</b>	<b>83.5</b>	<b>82.5</b>	<b>85.25</b>

**Performance Objective 2:** Students at BFCCPS will demonstrate competency as indicated by external measures in Science, Technology and Engineering.

- **MCAS:** 85% of students will achieve Proficient or Advanced on MCAS for each grade tested in Science, Technology and Engineering

**EVIDENCE:** Please see overall ranking on page 9 of this Annual Report.

**Performance Objective 3:** Students at BFCCPS in Grades 6 – 8 will demonstrate competency as indicated by external measures in the classical curricular areas of French and Latin.

- **National Latin Exam:** 85% of our sixth graders and eighth graders will score at or above the 75% on the exam.
- **Le Grand Concourse Exam:** 85% of the sixth, seventh, and eighth graders will score at or above 75% on the exam.

### National Latin Exam Results 2007

Percentage of Students who scored above 75%

6 <sup>th</sup> Grade	7 <sup>th</sup> Grade	8 <sup>th</sup> Grade
85%	89%	88%

**Goal was successfully met.**

### Le Grand Concourse Exam Results 2007

Percentage of Students who scored above 75%

6 <sup>th</sup> Grade	7 <sup>th</sup> Grade	8 <sup>th</sup> Grade
86%	88%	87%

**Goal was successfully met.**

**Performance Objective 4:** BFCCPS students will demonstrate competency as indicated by internal measures in each of the curriculum areas of the BFCCPS classical curriculum.

Internal Measures:

- internally designed tests
- project based assessments
- school wide satisfaction survey results

- English Language Arts:**
- 85% of students in Grades 1 - 8 will pass a year end grammar test with a score of 80% or higher
  - 85% of students in Grades 1 - 8 will achieve minimum benchmarks in written expression through the Six Traits Writing Program
  - 85% of students in Kindergarten will achieve minimum benchmarks in the Wilson Foundations beginning reading and writing program

**History and Social Studies:**

- 85% of students in Grades 5 - 8 will pass a year end exam with a score of 80% or higher
- 85% of Students in Grades 5 - 8 will successfully complete a Geography Fair Project and Report

**Math:**

- 85% of students in Grades 1 - 8 will pass a year end exam with a grade of 80% or higher
- 85% of Kindergarten students will achieve 80% or higher in year end performance based assessments

**Science and Technology:**

- 85% of students in Grades 1 - 8 will successfully complete a Science Fair Project and Report
- All students in Kindergarten – Grade 8 will successfully complete projects using one of the three computer labs

**French:**

- 85% of students in Grades 5 - 8 will pass a year end exam with a grade of 80% or higher

**Latin:**

- 85% of students in Grades 5 - 8 will pass a year end exam with a grade of 80% or higher

**General Music:**

- 85% of all students in Kindergarten – Grade 8 will demonstrate mastery of CKS grade level music standards through performances, projects and content exams

**Instrumental Music:**

- 80% of all students in Grades 4 - 8 will participate in Instrumental Lessons

**General Art and Art History:**

- 85% of all students in Grades 5 - 8 will demonstrate mastery of grade level art standards through performances, projects and content exams
- 85% of students in Kindergarten – Grade 4 will demonstrate mastery of grade level art standards by applying art elements within student work

**Library:**

- All students in Kindergarten – Grade 5 will demonstrate knowledge of basic Library Skills

**Physical Education:**

- Students in Grades 3 – 8 will successfully complete the BFCCPS fitness challenge

Teachers have developed tests and rubrics to measure student achievement in the following areas: Language Arts, History, Geography, Humanities, Math, Science, Latin, French, Art, Music, and Physical Education. Teachers submit rubrics, copies of tests, and samples of student work. The school is creating an archive of its work and standards. The table below depicts our progress towards our internal measurement goals. The percentages are provided per grade level when applicable, and goals are tallied as they are met.

**CROSS CURRICULAR K-8 INTERNAL GOAL MEASUREMENTS**

	<b>Grade K</b>	<b>Grade 1 – 2</b>	<b>Grade 3 - 4</b>	<b>Grade 5</b>	<b>Grade 6</b>	<b>Grade 7</b>	<b>Grade 8</b>	<b>Met Goal</b>
<b>English Language Arts:</b> 85% of students in Grades 1- 8 will pass a year end grammar test with a score of 80% or higher		89	88	87	67	82	91	5/6
<b>English Language Arts:</b> 85% of students in Grades 1 - 8 will achieve minimum benchmarks in written expression through the Six Traits Writing Program		87	93	87	91	56	57	4/6
<b>. English Language Arts:</b> 85% of students in Kindergarten will achieve minimum benchmarks in the Wilson Foundations beginning reading and writing program								6/6
<b>Letter Formation</b>	98							1/1
<b>Phonological Awareness</b>	93							1/1
<b>Sound Mastery</b>	95							1/1
<b>Sight Words</b>	98							1/1
<b>Comprehension</b>	100							1/1
<b>Written Composition</b>	91							1/1
<b>History:</b> 85% of students in Grades 5 - 8 will pass a year end exam with a score of 80% or higher.				85	74	89	89	3/4
<b>Geography:</b> 85% of students in grades 5-8 will successfully complete a geography fair project and report.				100	98	93	94	4/4

	Grade K	Grade 1 – 2	Grade 3 - 4	Grade 5	Grade 6	Grade 7	Grade 8	Met Goal
<b>Mathematics:</b> 85% of K students will achieve 80% or higher on a year end performance based assessment.								7/7
<b>Number Recognition</b>	91							1/1
<b>Addition</b>	91							1/1
<b>Subtraction</b>	91							1/1
<b>Geometry</b>	95							1/1
<b>Skip Counting</b>	91							1/1
<b>Money</b>	91							1/1
<b>Measurement</b>	95							1/1
<b>Mathematics:</b> 85% of students grades 1-8 will pass a year end exam with a grade of 80% or higher.		97	88	42	85	78	68	3/6
<b>Science:</b> 85% of 1-8 will successfully complete a Science Fair Project and report. .		100	100	100	98	98	91	6/6
<b>Technology:</b> All students K-8 will successfully complete a project using one of three computer labs	100	100	100	100	100	100	100	7/7
<b>French:</b> 85% of students in grades 5-8 will pass a year end exam with a grade of 80% or higher.				100	93	89	88	4/4
<b>Latin:</b> 85% of students in grades 5-8 will pass a year end exam with a grade of 80% or higher.				100	96	95	94	4/4

	Grade K	Grade 1 – 2	Grade 3 - 4	Grade 5	Grade 6	Grade 7	Grade 8	Met Goal
<b>General Music:</b> 85% of students K-8 will demonstrate mastery of CKS grade level music standards through performances, projects and, content exams.	100	100	100	100	100	100	100	7/7
<b>Instrumental Music:</b> 80% of students in grades 4-8 will participate in instrumental lessons.			87	50	68	53	60	1/5
<b>General Art and Art History:</b> 85% of students K-8 will demonstrate mastery of grade level standards by applying art elements through student work, performances, projects and content exams.	100	100	100	100	100	100	100	7/7
<b>Library:</b> All students in Kindergarten – Grade 5 will demonstrate knowledge of basic library skills.	100	100	100	100				4/4
<b>Physical Education:</b> Students in grades 3-8 will successfully complete the BFCCPS Fitness Challenge.			100	100	100	100	100	5/5

**II. Is the School Faithful to the Terms of its Charter?**

**Performance Objective 5:** The school will provide students a classical education that is coupled with Character Development

- |  |
|--|
| <ul style="list-style-type: none"> <li>• 100% of students in Kindergarten - Grade 4 will earn a leaf in the Forest of Virtues annually</li> <li>• 85% of parents of students in Kindergarten - Grade 8 will indicate on a annual survey that character development opportunities have made a positive impact on their child's personal growth, self esteem, habits of mind, sense of community, and behavior, and that their child understands the meaning of each virtue</li> <li>• 100% of students in students in Grades 6 - 8 will demonstrate character development by successfully completing projects through their individual advising groups</li> </ul> |
|--|

**Forest Of Virtue Awards 2007/8**

Grade Level	Total Number of Students at Grade Level	Total Number of Students who received a Leaf	Met Goal
K	44	44	Yes
1	44	44	Yes
2	45	45	Yes
3	45	45	Yes
4	44	44	Yes

**6-8 Character Development Project Completion 2007/8**

Grade Level	Total Number of Students at Grade Level	Total Number of Students who completed a project	Examples of Projects	Met Goal
6	46	46	-Character Role Models in History -Personnel Motto -Create a Character Ed Lesson Plan	Yes
7	40	40	-Character Role Models in History -Cradles 2Crayons -Reflections -Academic Goals	Yes
8	35	35	<u>Capstone Projects</u> -Recycle a Bicycle -Blankets for Homeless -Swimming Lessons -Student led activities for younger students during school sponsored events.	Yes

**Performance Objective 6:** BFCCPS will provide students with opportunities for Community Service

- |   |
|---|
| <ul style="list-style-type: none"> <li>• 100% of students in Kindergarten - Grade 5 will complete monthly community service activities within their homerooms</li> <li>• 100% of students in Grades 6 - 7 will complete service projects</li> <li>• 100% of students in Grade 8 will complete an approved yearlong Capstone service Project</li> <li>• 85% of students in Kindergarten - Grade 8 will indicate on a year end survey that the community service opportunities have made a positive impact on their personal growth, self esteem, habits of mind, sense of community, and contribution to school culture</li> <li>• 85% of parents of students in Kindergarten – Grade 8 will indicate on a year end survey that the community service opportunities have made a positive impact on their child’s personal growth, self esteem, habits of mind, sense of community, and contribution to school culture</li> </ul> |
|---|

- 100% of students in Kindergarten - Grade 5 will complete monthly community service activities within their homerooms
- 100% of students in Grades 6 - 7 will complete service projects

**2007-8 K-8 Community Service Activities at BFCCPS**

Grade	What Community service projects do you do at your grade level?	What community service program projects do you do in your classroom?	What support do you have now in preparing your community service project?
K	<ul style="list-style-type: none"> <li>- Projects within our school building/community</li> </ul>	<ul style="list-style-type: none"> <li>- Bookmarks for the library</li> <li>- Rake the leaves in the courtyard</li> <li>- Build bird feeders</li> <li>- Earth day trash cleanup</li> <li>- Library clean up</li> <li>- Clean classroom Shelves</li> </ul>	<ul style="list-style-type: none"> <li>- Parent Volunteers</li> </ul>
Grade 1	<p>Sept. – Review school rules (hallway, bathrooms, specialists' rooms', etc.); Establish and discuss classroom rules; discuss friendship (justice – virtue of the month). All done in class.</p> <p>Oct. – Bookmarks made for town of Franklin library patrons; cards made for firefighters expressing appreciation. Done in class and then delivered during "walking field trips."</p> <p>Nov. – Cards made for Meals on Wheels recipients. Done in class.</p> <p>Dec. – Placemats made for patients at St. Jude's Hospital. Done with partners from other first grade class.</p> <p>Jan. – Birdfeeders are made to help feed birds during winter. Done in class.</p> <p>Feb. – Valentine's Day cards made for Meals on Wheels recipients. (Last year we also collected supplies for soldier's in Iraq.) Done in class.</p> <p>Mar. – St. Patrick's Day cards made for Meals on Wheels recipients. (During 2004/2005 we collected supplies for animals at the Baypath Animal Shelter in Hopkinton.)</p> <p>April – Various projects are done around the school and at home in honor of Earth Day (i.e.: recycling, picking up trash at a playground, planting saplings provided by the Arbor Society, etc.) Done in class, within the school, and as homework.</p>	(detailed in first column)	<p>Parents assist students in collections; parents volunteer to drop off collected items; parents volunteer to chaperone field trips (i.e.: trip to senior center, trip to fire station, etc.)</p>

Grade	What Community service projects do you do at your grade level?	What community service program projects do you do in your classroom?	What support do you have now in preparing your community service project?
	<p>May/June – Students pair up with kindergarten friends, write a friendly letter to our friend and show them around the classrooms so that they have a better understanding of first grade. First grade teachers work with kindergarten teachers and plan an activity for students to work together in the first grade classroom so that the kindergarten children spend time in each first grade room with each teacher.</p>		
Grade 2	<p>Meals on Wheels Monthly Cards Pennies for Patients (leukemia) Senior Center Partnership fulfill needs at their request</p>	<p>Make cards and other items at the request of the Franklin Senior Center; cell phone and ink cartridge drive</p>	<p>Parent support when required for specified projects they walk to Senior Center with us Hope to collect supplies for Katrina Relief for a work trip I will be leading in November. Hope to provide school supplies for school in Tanzania where I have a contact.</p>
Grade 3	<p>Every year, we serve as book buddies to 1<sup>st</sup> grade with input from parent reps; we take on a year long project. One year it was the Franklin Nursing home which we visited 1 x a month. Another year we "adopted" my nephew's Marine Platoon in Iraq. We raised money by making and selling gift bags. We made cards and wrote letters.</p>	<p>Whatever is needed to support our projects. We also meet with 1<sup>st</sup> grade 1 x week.</p>	<p>We depend on parent input, ideas, and support in order to do special things.</p>
Grade 4	<p>Monthly cards for "Meals on Wheels" recipients, food drives, scarf sale.* *Will be more than happy to talk about this.</p>	<p>Book buddies  Same</p>	<p>We have had parent support for our fourth grade scarf project  It really varies year to year. Last year, we had lots of helping buying &amp; cutting fleece. Other years it has been something I've had to</p>
Grade 5	<p>Backpacks for Katrina victims Thank you letters Helped package care packages for service men and women Letters to Katrina victims Thank you notes to school personnel Safety tips for younger students Fall Safety tips for younger students</p>		
Grade 6	<p>Scarves Visiting Franklin Senior Center Food Drive</p>		
Grade 7	<p>Yoplait Lids Recycling Bins Clothing Drive</p>		
Grade 8	<p>Capstone Projects (Vary each year) School helpers (Office w/tasks etc Various drives (School supplies, gifts at Holiday time Clean up courtyard, playground</p>	<p>Visited senior center in past Used to help deliver food to senior community each month</p>	<p>Homeroom teachers sometimes work together. That is really all the support there is.</p>

- 100% of students in Grade 8 will complete an approved yearlong Capstone service Project

**Eight Grade Capstone Projects for 2007-2008 school year:**

Student/s	Advisor	Organization	Project
M. Williams	Callahan	Town of Medway	Environmental/trees Awareness of use of plastic
A. White	Buckley	Fire/police dept	Teady bears?
S.Dwyer, S. Sweig	Callahan/ Buckley	YMCA	Help special needs children in swimming and on the track
M.Vaughan/E.Ackman L.Ostrow	Callahan/Burke		Awareness of global warming and recycling
D. Muyuela/S. Saripalli	Burke	American Troops	Send blankets, cards, mags, toiletries
K. Waitkevich/ H.Switzer	Buckley/Burke	South Africa	Send care packages of toys, clothes
K. Knous	Buckley		Basketball clinics for kids with disabilities
J.Ostrow/M. Pradko	Simpson/Callahan	Birthday Wishes	Host b'day parties for homeless children
A. Williams/J.Peterson	Buckley/Callahan	Horizons	Make blankets for homeless
P. Irujayaraj	Simpson	PAC	Help this organization (for children with disabilities)
C. Adams	Callahan	Handy Kids	Help children with disabilities to ride horses
J. McNeill	Buckley	American Troops	Letter writing campaign with children in lower grades
A. Kacker/Z. Sarapas	Burke/Buckley		Raise awareness of needs of Native American Tribes
K.Collahan/A.Martin	Simpson		
A.Gora/D. Meredith/ M. Capone, E. Kripp	Simpson/Buckley/ Burke/Callahan	BFCCPS	Babysitting services
O. O'Connell	Burke	BFCCPS	Health Week/Healthy eating
T. Reks	Callahan	Empty Bowls	Raise money thru purchase/paint bowls
M.Hunt/Z. Forsythe	Callahan/Simpson	World Hunger	Raise money for hunger
S. Zatkowski/ H.Khalsa	Callahan/Simpson	Forge Hill Assist. Living	Play games and visit with seniors
E. McCarthy Earls	Callahan	Boston Based Charity	Collect Bikes and donate to Boston Based Charity
P. Gonya	Simpson	Church in Providence, RI	Distribute clothing

- 85% of students in Kindergarten - Grade 8 will indicate on a year end survey that the community service opportunities have made a positive impact on their personal growth, self esteem, habits of mind, sense of community, and contribution to school culture
- 85% of parents of students in Kindergarten – Grade 8 will indicate on a year end survey that the community service opportunities have made a positive impact on their child's personal growth, self esteem, habits of mind, sense of community, and contribution to school culture

During the previous year the school completed an extensive survey that was over 100 pages, as part of a board task force. This year under the impression our community had been "surveyed out" we relied on two surveys from our student service director. These surveys were of our staff and parent community and were overwhelmingly positive.

We plan to revamp our survey system this year in a joint effort between the board and school administration.

**Performance Objective 7:** BFCCPS will assist parents in their role of Primary Educator.

- 100% of parents of students in Kindergarten – Grade 8 will return a completed Family Pledge
- 85% of parents in Kindergarten – Grade 8 will indicate on an annual survey that the opportunities for Parents as Primary Educators was enhanced by the school

- 100% of parents of students in Kindergarten – Grade 8 will return a completed Family Pledge

92% of parents of students in Kindergarten – Grade 8 returned a completed Family Pledge as of October 1<sup>st</sup> 2007.

- 85% of parents in Kindergarten – Grade 8 will indicate on an annual survey that the opportunities for Parents as Primary Educators was enhanced by the school

During the previous year the school completed an extensive survey that was over 100 pages, as part of a board task force. This year under the impression our community had been “surveyed out” we relied on two surveys from our student service director. These surveys were of our staff and parent community and were overwhelmingly positive.

We plan to revamp our survey system this year in a joint effort between the board and school administration.

**III. Organizational Viability**

**Performance Objective 8:** BFCCPS will maintain financial stability.

- BFCCPS will have an annual balanced budget.

**BFCCPS Approved Budget FY 09**

<b>Operating Revenue:</b>	
- Commonwealth of MA Tuition	3,508,846
- DOE Grants	70,000
- Bank Interest	60,000
- Pass Thru (milk, hot lunch, gym Uniforms, before school, field trips	
- Private Grants/Donations	
- Annual Fund	15,000
- Transfer from Reserve	70,000
- Foundation	
<b>Subtotal Operating Revenue</b>	<b>3,723,846</b>
<b>FACILITY REVENUE</b>	<b>356,580</b>
<b>Total Revenue</b>	<b>4,080,426</b>
<b>EXPENSES:</b>	
<b>Personnel:</b>	

- Payroll – Salaries	2,725,260
- Payroll – Substitutes	30,000
- Payroll – Stipends	28,750
- Payroll – Taxes	80,502
- Education Consultant	
- Technology Consultant	5,000
- SPED External Services	10,000
- Development Consultant	
- Faculty Input Team	12,000
- Teacher Workshops	25,000
- Tuition Teacher Reimbursement	12,500
- Ins Dental	40,931
- Ins Health	293,710
- Ins LTD, STD, Life	23,000
<b>Subtotal personnel</b>	<b>3,286,653</b>
<b>Facility:</b>	
- Building Lease – St. Mary's	195,000
- General Maintenance	80,000
- Facility Expense	30,000
- Utl Water	8,250
- Utl Gas	38,500
- Utl Electric	26,400
<b>Subtotal Facility</b>	<b>378,150</b>
<b>Curriculum*:</b>	
- Visual Arts	4,000
- Instrumental Music	4,500
- Drama	500
- Music	1,400
- Arts Block	500
- Latin	2,500
- French	2,420
- Physical Education	4,000
- Books/Supplies K-4	25,000
- Books/Supplies 5-8	25,000
- Library/Reading	2,175
- Math/Social Studies Program	40,000
- ELA FY 09, Science FY 10 programs	80,000
- Character Education/4 Pillars combined	10,000
- Community Service	
- Parent Enrichment	
- Testing	4,000
- Special Services Supplies	5,000
- Technology supplies, licenses & equipment	24,000
<b>Subtotal Curriculum</b>	<b>234,995</b>
<b>Other:</b>	
- Professional Development	10,000
- Core Knowledge	
- Outside Prof Svcs/HR/Legal	10,000
- Academic Consultant	
- Audit	17,000
- Advertising	12,000
- Furniture	
- Copier	35,000

- Supplies	15,000
- Memberships/Subscriptions	7,500
- Petty Cash	500
- Payroll Fee	4,000
- Telephone	7,000
- Potable	500
- Postage	5,000
- Cafeteria Supplies	1,000
- Graduation	1,000
- Hospitality	500
- Ins Liability	12,000
- Ins Workers Comp	20,000
- Nurse	4,000
- Printing Services	2,500
- Connect Ed	2,500
- Middle school Sports	2,500
- Board Expenses	1,500
- Pass Through Expenses	
<b>Subtotal Other</b>	<b>171,000</b>
<b>TOTAL EXPENSES</b>	<b>4,070,798</b>
<b>TOTAL REVENUE LESS TOTAL EXPENSES</b>	<b>9,628</b>

- BFFCCPS will successfully complete an annual external audit.

BFFCCPS completed an independent audit. The General Purpose Financial Statements (June 30 2007 and 2006) together with the Independent Auditor's report is available online at

<http://www.bfccps.org/main/AboutUs/Documents/AuditorsReport2007.pdf>

- Enrollment stability of BFFCCPS.

#### Enrollment Waitlist Numbers

	K	1	2	3	4	5	6	7	8	Total
2005/6	47	22	26	28	6	0	0	0	0	129
2006/7	52	29	27	8	12	8	0	0	0	136
2007/8	34	33	16	8	11	16	0	0	0	118

**Performance Objective 9:** BFFCCPS will maintain organizational stability.

- The Board will meet a minimum of 10 times a year, will have regularly scheduled public elections and minutes will be provided and posted on the school website.

The board minimally meets every second Thursday of each month in the BFFCCPS school library. The agenda and minutes are posted to the school website after each meeting.

<http://www.bfccps.org/main/Board/Meetings.asp>

- The BFFCCPS website will be regularly maintained and kept current.

The website is constantly maintained and updated daily, by or web-master Ben Benjamin

- The Board will develop and meet annual goals of the Strategic Plan

A draft of the new Strategic Plan for fiscal year '09 has been approved by the Board of Trustees. We expect final approval at the September meeting of the board. This document like all policies and procedure of the school will be publicly posted at that time.

- The Board will recruit and retain qualified leadership and faculty

Please see items numbered 19 & 20 on page 26.

- The Board will review a third of board policies and bylaws annually

Under the leadership of Tim Tracey, the Governance committee chair. The board reviewed over forty percent of policies this year, and will continue this practice going forward. Updated policies and changes are posted on our website

- The board will develop task forces as situation deem them necessary

This continues to be a practice of the board. An example of the task forced this year, was the Dress Code task force that completed their work and reported to the board at the June meeting.

- The Board will provide new members appropriate training

The board has always provided training for new board members. This year training was provided at our annual retreat on July 12<sup>th</sup>.

#### **10. Number of Instructional Days for the 2007 – 2008 School Year:**

- Total number of instructional days for the 2007 – 2008 school year were 180 days.
- Start date for the school year was August 28, 2007, and the end date was June 17, 2008.
- Hours of operation: 9:00 am – 3:10 pm for grades K – 5; 8:20 am – 3:10 pm for grades 6 – 8.

**11. List of Members of the Board of Trustees:**

**School Year 2007 – 2008**

<b>Name</b>	<b>Employer Or Expertise</b>	<b>Board Position Date Served</b>	<b>Date of Election</b>	<b>Term Of Appointment</b>	<b>Board Committee</b>
John H. Neas	Real Estate Appraisal	President	May 19, 2005	July 2005 – June 2008	Facilities
Lori Clements	Lawyer	Vice President	May 11, 2006	July 2006 – June 2009	Human Resources, Governance, Nominating
Anna dos Santos	Planning, Management, Policy Development	Treasurer	May 11, 2006	July 2006 – June 2009	Finance, Governance
Richard Frongillo	Technology firm	Secretary/ Clerk	May 19, 2005	July 2005 – June 2008	
Kevin Buckley	BFCCPS Teacher	Faculty Representative	June 14, 2007	July 2007 – June 2008	-----
Charles Mayo	UMass Medical School		May 11, 2006	July 2006 – June 2009	Mission
Jennifer Moccia	Marketing, Development, PR		June 14, 2007	July 2007 – June 2008	Public Relations
Cheryl O'Donnell	Benjamin Franklin Bank		August 9, 2007	August 9, 2007 – June 2010	-----
Michele Pearl	BzzAgent		May 19, 2005	July 2005 – June 2008	Enrollment Task Force
Cathy Tomaso	Putnam Investments		May 11, 2006	July 2006 – June 2009	Enrollment Task Force
Tim Tracy	Actuary – Sun Life Financial		June 14, 2007	July 2007 – June 2010	Governance, Nominating
Thomas Viveiros	Assurance Technology Corp		November 8, 2007	November 2007 – June 2010	Legislative Liaison
Poh-Lin Yeoh	Professor of Marketing - Bentley College		June 14, 2007	July 2007 – June 2009	Public Relations

**12. Summary of Major Policy Decisions Made by the Board of Trustees:**

<b>Meeting Dates</b>	<b>Major Policy Decisions</b>
<b>August 9, 2007</b>	Motion to elect Cheryl O'Donnell to the Board of Trustees. Motion approved.
<b>September 6, 2007</b>  <b>September 26, 2007</b>	<p>Motion to not join the Group Insurance program approved by the State for this year. Motion approved.</p> <p>Motion to accept audit documents. Motion approved.</p> <p>Motion to elect Lori Clements as Vice President. Motion approved.</p> <p>Motion to recognize Katherine Ginnetty at 10/11 meeting. Motion approved.</p> <p>Motion to approve the list of signatories on the Dain Rauscher Investment Account. Motion approved.</p> <p>Motion to approve the charge to the Elections Task Force. Motion approved.</p> <p>Motion to approve the charge to the Enrollment Task Force. Motion approved.</p> <p>Motion to appoint Michele Pearl and Cathy Tomaso as Co-Chairs of the task force. Motion approved.</p>
<b>October 11, 2007</b>  <b>October 25, 2007</b>	<p>Motion to approve the law firm of Murphy Hesse Toomey &amp; Lehane LLP as legal counsel for the school. Motion approved</p> <p>Motion to increase the personnel budget by a maximum amount of \$75,000 to fund a classroom aide and an additional SPED teacher. Motion approved.</p> <p>-----</p>
<b>November 8, 2007</b>	<p>Motion to elect Thomas Viveiros to the Board of Trustees. Motion approved.</p> <p>Motion to accept the resignation of Chuck Mayo as Clerk. Motion approved.</p> <p>Motion to elect Richard Frongillo as Clerk. Motion approved.</p> <p>Motion to approve the Finance Committee description and members. Motion approved.</p> <p>Motion to approve the Premium Only Section 125 Cafeteria Plan. Motion approved.</p> <p>Motion to approve the Facilities Committee description and members. Motion approved.</p> <p>Motion to extend the lease for the first one-year option term. Motion approved.</p> <p>Motion to allow the Facilities Committee to begin lease negotiations with the Church when the time is appropriate. Motion approved.</p> <p>Motion to approve the Governance Committee description and members. Motion approved.</p> <p>Motion to approve the HR Committee description and members. Motion approved.</p> <p>Motion to approve the Mission Committee members. Motion approved.</p> <p>Motion to approve Nav Chander as an alternate to the Board of Trustees. Motion approved.</p> <p>Motion to approve the PR Committee description and members. Motion approved.</p>

<p><b>January 10, 2008</b></p>	<p>Motion to release funds of \$80,000 to purchase math materials for a new math curriculum. Motion approved.          Motion to approve the adjusted budget as shown in the projection column of 1/5/08 FinCom meeting. Motion approved.          Motion to approve the Fiscal Policies as presented with the suggested amendments to Section 3. Motion approved.          Motion to approve the Accountability Plan as presented. Motion approved.          Motion to seek an application for charter renewal one year early. Motion approved.          Motion to approve changes to Bylaws: 2.1.3 change to “majority of sitting”, 4.2 change to “majority of sitting”, 4.9 change to “majority of sitting” subject to board review prior to sending to DOE. Motion approved.</p>
<p><b>February 14, 2008</b></p>	<p>Motion to redefine the previously approved Math Program budget line item to include both math and social studies materials. Motion approved.          Motion to accept math curriculum as presented by the Head of School. Motion approved.          Motion to repeal Board Policies 3, 4, 6 and 11. Motion approved.          Motion to extend reporting date of Enrollment Task Force to April of 2008. Motion approved.</p>
<p><b>March 13, 2008</b></p>	<p>Motion to approve the letter of invitation to be sent to financial firms as soon as possible. Motion approved.          Motion to approve the recommendation of the Human Resources Salary Grid Subcommittee stipulating salary increases for all employees of 10%, 7% and 5% in the upcoming three years. Motion approved.          Motion to approve changes to Policy No. 17. Motion approved.</p>
<p><b>April 10, 2008</b></p>	<p>Motion to award the three-year auditing contract to the firm of Alexander, Aronson, Finning &amp; Company, PC. Motion approved.          Motion to approve the investment policy statement as amended to obscure the account number. Motion approved.          Motion to approve the modifications to Policy No. 25 to make reference to the investment policy statement. Motion approved.          Motion to approve the 2008-2009 school calendar as presented. Motion approved.</p>

<p><b>May 8, 2008</b></p>	<p>Motion to approve the Fiscal Year 2009 budget as presented. Motion approved.          Motion to accept the report of the Enrollment Task Force with the thanks of the Board. Motion approved.          Motion to repeal Policy No. 12 on Bill Payment. Motion approved.          Motion to repeal Policy No. 5 on School Programs. Motion approved.          Motion to approve edits to Policy No. 18 on use of Alcohol and Tobacco removing requirement for approval of Board. Motion approved.</p>
<p><b>May 15, 2008</b></p>	<p>Motion to form a Board Task Force to review the current Dress Code Policy and make recommendations to be presented at the 6/11 Board meeting. Motion failed.          Motion to form a Board Task Force to review current Dress Code Policy and make recommendations. Motion approved.          Motion to form a committee with these twelve members as discussed plus any additional Faculty representatives that may wish to join. Motion approved.          Motion to support the BFCCPS Foundation in its pursuit of a civil action related to the Washington Street property; to begin negotiations with the Church for lease of current building; to engage a commercial broker; and to produce and distribute a newspaper advertisement seeking alternatives for a new school site. Motion approved.</p>
<p><b>June 11, 2008</b></p>	<p>Motion to adjust the Fiscal Year 2009 budget to increase revenue from reserves by \$40,000 and increase expense line item for social studies program by \$40,000 to account for the purchase of history materials. Motion approved.          Motion to approve the Letter of Agreement with Dr. O'Malley as presented. Motion approved.          Motion to accept Policy No. 7 on Health Administration as presented. Motion approved.          Motion to accept Policy No. 8 on Library as presented with the amendment that Section 3.4 be removed. Motion approved          Motion to remove Policies No. 13 on Fundraising Monies and No. 14 on Grant Administration and replace them with a new Policy No. 13 adding a phrase "except as undertaken by the Board of Trustees" to Section 4.1. Motion approved.          Motion to repeal the obsolete Policy No. 16 on Copyright. Motion approved.          Motion to accept changes to Policy No. 21 on Compensation. Motion approved.          Motion to add language to recommended Dress Code Policy stipulating that the HOS has the authority to determine appropriate attire for all special days and field trips. Motion approved.          Motion to remove language regarding HOS authority on special days and field trips. Motion approved.          Motion to accept the recommended Dress Code as presented by the Task Force. Motion approved.          Motion to approve Gail Trotin as the Faculty Representative to the Board. Motion approved.          Motion to elect Lisa Buchholz, Nav Chander, Richard Frongillo and John Neas to the Board of Trustees. Motion approved.          Motion to elect John Neas as Board President. Motion approved.          Motion to elect Lori Clements as Board Vice President. Motion approved.          Motion to elect Anna dos Santos as Treasurer. Motion approved.          Motion to elect Richard Frongillo as Clerk. Motion approved.</p>

**13. Charter amendments approved by the Commissioner of the Board of Education:**

On March 14, 2008, the Acting Commissioner of Education approved the school's request, dated February 8, 2008, to make changes to certain sections of the Benjamin Franklin Classical Charter School's Bylaws as detailed in your letter. Pursuant to 603 CMR 1.11, the Commissioner's approval operates to amend the charter as granted to Benjamin Franklin Classical Charter School.

The requested amendments to the bylaws were to change the requirement for a 2/3 vote of the Board to elect members and officers to a majority vote.

**14. Summary of Official Complaints Received by the Board of Trustees:**

None

**15. Student Demographics:**

**Students Enrolled by Grade:**

K	1	2	3	4	5	6	7	8	Total
44	44	45	47	46	48	46	40	35	395

**Enrollment by Race/Ethnicity:**

African American	Asian	Hispanic	Native American	White	Multi-Race, Non Hispanic
1.0%	12%	0.0%	0.0%	85.0%	2.0%

**Enrollment by Gender:**

- Male 197; Female 198 for a Total 395

**Enrollment of Low Income Status:**

- 2.0%

**Percentage of Students Classified as English Language Learners (ELL):**

- 0.0%

**Percentage of Students Classified as Limited English Proficient (LEP):**

- 0.0%

**Percentage of Students as Special Education:**

- 8.8%

**16. Total Number of Student Applications Received:**

**Total Number of Student Applications Received by Grade:**

<b>Grade</b>	<b>K</b>	<b>1</b>	<b>2</b>	<b>3</b>	<b>4</b>	<b>5</b>	<b>6</b>	<b>7</b>	<b>8</b>
<b># of Apps Received</b>	130	45	24	32	23	26	19	7	4

**Total Number of Student Applications Received by Residence:**

<b>Residence</b>	<b>Number of Applications</b>
Ashland	2
Attleboro	12
Bellingham	38
Blackstone	12
Braintree	1
Dedham	1
Foxborough	4
Framingham	1
Franklin	139
Grafton	1
Holliston	4
Hopedale	2
Mansfield	2
Medway	25
Milford	24
Millis	6
Norfolk	10
Northbridge	2
North Attleboro	5
Norwood	3
Plainville	5
Upton	2
Uxbridge	2
Walpole	2
Wrentham	5
<b>Total</b>	<b>310</b>

**Total Number of Applications Received Compared to the Number of Openings:**

<b>Grade</b>	<b>K</b>	<b>1</b>	<b>2</b>	<b>3</b>	<b>4</b>	<b>5</b>	<b>6</b>	<b>7</b>	<b>8</b>
# of Apps Received	126	45	24	32	23	26	19	7	4
# of Openings	44	0	2	3	0	2	0	2	8

**17. Student Attrition Data:**

**Students Who Left During the School Year:**

<b>Grade</b>	<b>Students Who Left During the School Year</b>	<b>Reason</b>
K	1	Transferred to other district public school
1	0	
2	0	
3	0	
4	0	
5	0	
6	0	
7	1	Transferred to other district public school
8	0	
<b>TOTAL ATTRITION</b>	<b>2</b>	

As of October 1, 2007, we had a total membership of 395 students enrolled. As of June 30, 2008, we had 0 students who left the school after September 28, 2007.

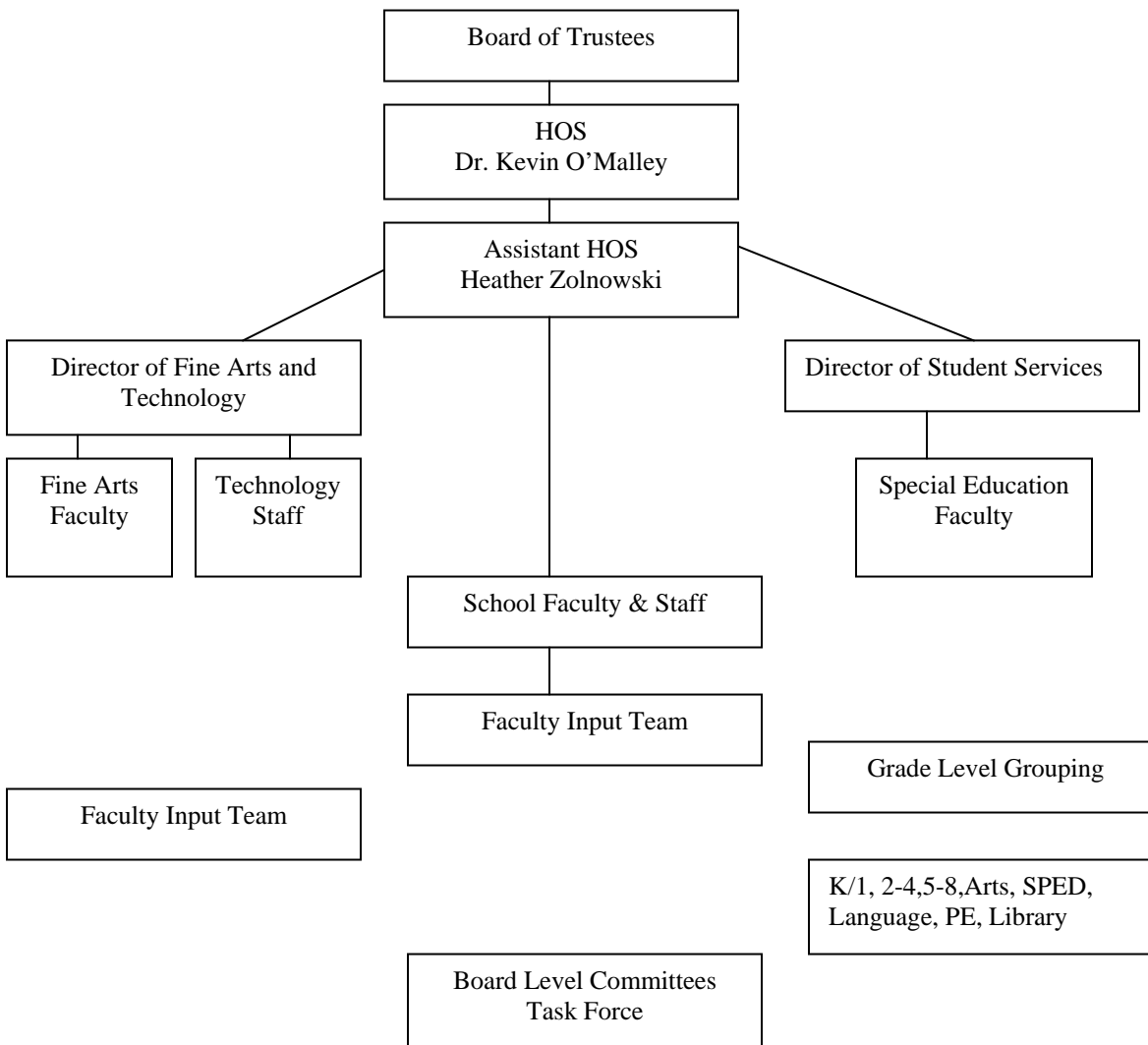
**Students Who Finished the Year, but are Not Returning:**

<b>Grade</b>	<b>Students Who Finished the Year But Are Not Returning</b>	<b>Reason</b>
K	0	
1	1	Move to Canada
2	0	
3	1	Move to Canada
4	0	
5	2	Preferred other public school
6	4	2 Preferred other public school 2 Preferred private school
7	1	Move out of state
8		Graduated to High School
<b>TOTAL</b>	<b>9</b>	

**18. Number of Students Who Have Been Expelled and Who Have Served In-School and Out-of-School Suspensions:**

In-School Suspension	Out-of-School Suspension	Expelled	Total	Reasons
0	5		5	Inappropriate conduct

**19. Name of School Administrators and Organizational Chart:**



**Attrition Among Administrative Staff:**

During the 2007 – 2008 year there was no attrition among administrative staff.

**20. Summary of Classroom Teacher Qualifications**

**Full Time Equivalent (FTE) Teachers and Aides:**

<b>Faculty Positions</b>	<b>Total</b>	<b>Faculty Positions</b>	<b>Total</b>
Classroom Faculty	18.0	Drama	0.1
Classroom Aides	4.0	Art	1.0
French	1.3	Dance	0.0
Latin	0.5	SPED Teachers	3.0
Physical Education	1.5	SPED Aides	4.0
Librarian	0.6	Speech Pathologist	0.8
Student Newspaper	0.0	Occupational Therapist	0.8
Instrumental	2.0	Reading Specialist	1.0
Music	0.6	<b>Total</b>	<b>38.2</b>

**Faculty Data:**

Percentage of Core Academic Teachers Identified as Highly Qualified: 97.5%  
 Percentage of Teachers Licensed in Teaching Assignment: 97.5%  
 Total number of Teachers in Core Academic Areas: 27  
 Average years of teaching experience of classroom teachers: 10 years  
 Average years of service at the school: 5 years

**Class Size and Student/Teacher Ratio:**

The average class size: 23 students.  
 Student/Teacher Ratio: 13 to 1

**21. Teacher Attrition:**

The percentage of Teaching Faculty employed by the school that have left since the beginning of the school year is: 0%.

The percentage of Teaching Faculty not returning is: 7.5%. The percentage is made up of:

- 2 Retirements
- 2 Moves
- 1 Disability

**21. Fiscal Year 2008 Statement of Revenues, Expenses, and changes in Net Assets (Income Statement):**

Un-audited Financial Statement for the Fiscal Year 2008.

**BFCCPS DRAFT FINANCIAL STATEMENTS 2007 – 2008**

<b>OPERATING REVENUE:</b>	
- Commonwealth of MA Tuition	3,253,866
- DOE Grants	74,917
- Bank Interest	57,500
- Private Grants/Donation	7,743
- Foundation	10,848
<b>Subtotal Operating Revenue</b>	<b>3,404,874</b>
<b>FACILITY REVENUE</b>	<b>335,355</b>
<b>Total Revenue</b>	<b>3,740,229</b>
<b>EXPENSES:</b>	
- Personnel	2,819,974
- Facility	376,399
- Curriculum*	131,139
- Other:	178,587
<b>TOTAL EXPENSES</b>	<b>3,506,099</b>
<b>TOTAL REVENUE LESS TOTAL EXPENSES</b>	<b>234,130</b>
<b>DEPRECIATION</b>	<b>90,180</b>

**23. Fiscal Year 2008 Statement of Net Assets (Balance Sheet)**

**Balance Sheet for the Fiscal Year 2008.**

	<u>Jun 30, 08</u>
<b>ASSETS</b>	
<b>Current Assets</b>	
<b>Checking/Savings</b>	
1000 - BFCCS	968,751.74
1020 - Cash-Band	124.01
1040 - Money Market	35.46
1030 - RBC Dain Rauscher	<u>1,432,074.79</u>
<b>Total Checking/Savings</b>	<b>2,400,986.00</b>
<b>Accounts Receivable</b>	
1101 - Uncollectible Receivables	-1,438.28
1100 - Accounts Receivable	<u>1,143.18</u>
<b>Total Accounts Receivable</b>	<b>-295.10</b>
<b>Other Current Assets</b>	

1210 - Due from Foundation	0.50
<b>Total Other Current Assets</b>	<u>0.50</u>
<b>Total Current Assets</b>	2,400,691.40
<b>Fixed Assets</b>	
1370 - Computer Equipment	
1390 - Technology lab	78,072.17
1380 - 99 Technology	1,905.00
1370 - Computer Equipment - Other	<u>25,060.75</u>
<b>Total 1370 - Computer Equipment</b>	105,037.92
1600 - Accumulated Depreciation	-378,431.00
1330 - Furniture & Fixtures-Instrument	4,588.00
1360 - Furniture and fixtures	53,977.81
1340 - Instruments	19,299.37
1300 - Leasehold improvements - bldg	
1301 - Wheelchair lift	24,274.00
1300 - Leasehold improvements - bldg - Other	<u>53,239.14</u>
<b>Total 1300 - Leasehold improvements - bldg</b>	77,513.14
1320 - Modular Building	<u>293,002.94</u>
<b>Total Fixed Assets</b>	174,988.18
<b>Other Assets</b>	
1400 - prepaid expenses	<u>6,325.10</u>
<b>Total Other Assets</b>	<u>6,325.10</u>
<b>TOTAL ASSETS</b>	<u><u>2,582,004.68</u></u>
<b>LIABILITIES &amp; EQUITY</b>	
<b>Liabilities</b>	
<b>Current Liabilities</b>	
<b>Accounts Payable</b>	
2000 - Accounts Payable	<u>4,949.70</u>
<b>Total Accounts Payable</b>	4,949.70
<b>Other Current Liabilities</b>	
2140 - Accrued Vacation	32,650.21
2001 - Salaries payable (net check)	2,440.95
2008 - MTRB liability - employee	-252.29
2006 - Dental Ins liability - employee	62.23
2005 - Health Ins Liability - employee	6,089.17
Ben Franklin Savings Overdraft	-13.17
2130 - Accrued expenses - payroll	215,705.92
2100 - Deferred Rev-grants	<u>0.31</u>
<b>Total Other Current Liabilities</b>	<u>256,683.33</u>
<b>Total Current Liabilities</b>	<u>261,633.03</u>

<b>Total Liabilities</b>	261,633.03
<b>Equity</b>	
3200 - invesment in Fixed Assets	315,958.00
3000 - Opening Bal Equity	-59,424.08
3100 - Retained Earnings	1,907,110.61
Net Income	<u>156,727.12</u>
<b>Total Equity</b>	<u>2,320,371.65</u>
<b>TOTAL LIABILITIES &amp; EQUITY</b>	<u><b>2,582,004.68</b></u>

## 24. Fiscal Year 2009 Approved School Budget

### BFCCPS Approved Budget FY 09

<b><i>Operating Revenue:</i></b>	
- Commonwealth of MA Tuition	3,508,846
- DOE Grants	70,000
- Bank Interest	60,000
- Pass Thru (milk, hot lunch, gym Uniforms, before school, field trips	
- Private Grants/Donations	
- Annual Fund	15,000
- Transfer from Reserve	70,000
- Foundation	
<b><i>Subtotal Operating Revenue</i></b>	<b>3,723,846</b>
<b><i>FACILITY REVENUE</i></b>	<b>356,580</b>
<b><i>Total Revenue</i></b>	<b>4,080,426</b>
<b><i>EXPENSES:</i></b>	
<b><i>Personnel:</i></b>	
- Payroll – Salaries	2,725,260
- Payroll – Substitutes	30,000
- Payroll – Stipends	28,750
- Payroll – Taxes	80,502
- Education Consultant	
- Technology Consultant	5,000
- SPED External Services	10,000
- Development Consultant	
- Faculty Input Team	12,000
- Teacher Workshops	25,000
- Tuition Teacher Reimbursement	12,500
- Ins Dental	40,931
- Ins Health	293,710
- Ins LTD, STD, Life	23,000
<b><i>Subtotal personnel</i></b>	<b>3,286,653</b>

<b>Facility:</b>	
- Building Lease – St. Mary's	195,000
- General Maintenance	80,000
- Facility Expense	30,000
- Utl Water	8,250
- Utl Gas	38,500
- Utl Electric	26,400
<b>Subtotal Facility</b>	<b>378,150</b>
<b>Curriculum*:</b>	
- Visual Arts	4,000
- Instrumental Music	4,500
- Drama	500
- Music	1,400
- Arts Block	500
- Latin	2,500
- French	2,420
- Physical Education	4,000
- Books/Supplies K-4	25,000
- Books/Supplies 5-8	25,000
- Library/Reading	2,175
- Math/Social Studies Program	40,000
- ELA FY 09, Science FY 10 programs	80,000
- Character Education/4 Pillars combined	10,000
- Community Service	
- Parent Enrichment	
- Testing	4,000
- Special Services Supplies	5,000
- Technology supplies, licenses & equipment	24,000
<b>Subtotal Curriculum</b>	<b>234,995</b>
<b>Other:</b>	
- Professional Development	10,000
- Core Knowledge	
- Outside Prof Svcs/HR/Legal	10,000
- Academic Consultant	
- Audit	17,000
- Advertising	12,000
- Furniture	
- Copier	35,000
- Supplies	15,000
- Memberships/Subscriptions	7,500
- Petty Cash	500
- Payroll Fee	4,000
- Telephone	7,000
- Potable	500
- Postage	5,000
- Cafeteria Supplies	1,000
- Graduation	1,000
- Hospitality	500
- Ins Liability	12,000
- Ins Workers Comp	20,000
- Nurse	4,000
- Printing Services	2,500

- Connect Ed	2,500
- Middle school Sports	2,500
- Board Expenses	1,500
- Pass Through Expenses	
<b>Subtotal Other</b>	<b>171,000</b>
<b>TOTAL EXPENSES</b>	<b>4,070,798</b>
<b>TOTAL REVENUE LESS TOTAL EXPENSES</b>	<b>9,628</b>

**25. Plans for dissemination for the School Year 2007 - 2008:**

**HOS and Faculty Presentation and Dissemination Activities:**

BFCCPS has worked diligently to disseminate “Best Practices” and Projects. The Faculty, Staff, and Administration were particularly involved in the dissemination.

**Faculty Presentations and Dissemination Activities:**

- Reading Specialist oversaw the celebration of Dr. Seuss’ Birthday Celebration which included special guests to read to lower grades, a designated time for silent reading and cupcakes to celebrate his birthday.
- Student Art work on display:
  - Franklin Public Library
  - Art showcase Plainville Library
  - Barnes and Noble Art Show
  - Student Art work on display for the month of November
- BFCCPS Music Recital
- Student Solo and Duet performances for community
- BFCCPS School Tours and presentations
- BFCCPS Special Education Program Evaluation and Reports
- Franklin Public Schools Lifelong Learning Summer Program:
  - Art Class
  - French Class
- BFCCPS Summer Programs:
  - Academic
  - Enrichment
  - Instrumental Lessons
- BFCCPS Basketball Team playing other charter schools
- Online exchange of information via BFCCPS Website [www.bfccps.org](http://www.bfccps.org)
- MA Charter School Association
- OT & Speech Faculty presented to parents on Co-Treatment in the Inclusive Classroom
- BFCCPS named one of the “Top 100 Schools in America for Music Education” from the NAMM Foundation

**Student Presentations and Dissemination Activities:**

- Project Adventure - 6<sup>th</sup> Grade teambuilding field trip
- Camp Becket - Team building field trips
- YMCA - Grade 6 & 7
- Franklin School of the Performing Arts student recitals
- Math League
- National Latin Exam
- National French Contest (FLES Contest)

- BFCCPS Symphonic Band and Chorus participation in Music in the Parks Music Festival. Both performing groups received excellent ratings and First Place Trophies. The Symphonic Band also won the overall.
- Lego League Educational Enrichment Program Student participation
- Barnes and Noble Events-Student Recital
- Rube Goldberg Machine Contest/Fay School/MIT Program Partnership
- Spring Musical “Aladdin Jr.”

#### **Board of Trustee’s Presentations and Dissemination Activities:**

- Commonwealth of Massachusetts Department of Education Coordinated Program Review Mid-cycle Corrective Action Plan Progress Reports
- Commonwealth of Massachusetts Department of Education BFCCPS Annual Report
- Commonwealth of Massachusetts Department of Education BFCCPS Accountability Plan and Data
- Online exchange of information via BFCCPS website [www.bfccp.org](http://www.bfccp.org)
- Franklin Area Chamber of Commerce presentations
- Commonwealth of Massachusetts Department of Education BFCCPS Annual Report Meetings-Worcester, MA
- Franklin School Committee & BFCCPS Board of Trustees joint meeting held at Franklin Town Hall presentations
- Commonwealth of Massachusetts Department of Education Annual Reports Meetings-Worcester Massachusetts

#### **Educators or Community Members Who Have Formally Visited:**

- Collaboration with Dean College Education Department
- Fire Chief: Gary McCarraher for Read Across America
- Town Administrator: Jeffrey Roy for Read Across America
- Meteorologist: Fox News Kevin Leamanowitz visits grade 4
- Executive Director of the French Library Alliance (Francaise of Boston): Elain Uzan Leary: To speak with 7<sup>th</sup> & 8<sup>th</sup> graders
- PAC meeting with Franklin District Schools
- French Consul General at Boston: Francois Gauthier and Neil LeBlanc
- Latin chairperson of Rivers School, John McVey, also Editor of CANE Instructional Materials
- Officers Eric Cusson and Dan McLean on safety and bullying
- Brad Sidwell, Athletic Director at Franklin High
- Bartt Pinchuck from the Franklin YMCA

#### **Media Dissemination Activity:**

- American Association of Teachers 2<sup>nd</sup> place winner in grades 6-8 and honorable mention in the **National French Week Essay Contest**
- 4<sup>th</sup> graders interviewed for *Parents and Kids* December issue magazine

#### **Memberships:**

- MCPSA: Massachusetts Charter Public School Association
- Association of Supervision and Curriculum?
- Franklin Chamber of Commerce
- Core Knowledge Foundation
- Massachusetts Music Educators Association (MMEA)
- Music Educators National Conference (MENC)
- Technology Institute for Music Educators (TIME)

- Association for Supervision and Curriculum Development (ASCD)
- National Association for Supervisors in Music Education (NASME)

### **Competitions:**

- Rube Goldberg
- Destination Imagination- 6 teams, one team took second place
- Lego League-presented in late fall
- Music in the Parks-Symphonic band and chorus

### **Other:**

- Banking program with Dean Bank: "It Pays to Save" contest; 3 winners who received \$50.00 savings bond and \$5.00 for each high grade
- Art show at the Franklin Public Library
- "Charter Starters" participate in the annual American Cancer Relay for Life at Franklin High School- Parents and students
- "Ben's Best" participate in the annual Project Bread Walk for Hunger in Boston-Faculty and staff
- Marching band participate in Franklin's annual Memorial Day Parade
- (21) 8<sup>th</sup> grade poems selected for publication in *Creative Communications: A Celebration of Young Poets*
- (9) Students participated in MA Music Educators Central District chorus and band
- Community Service Projects supported the following institutions:
  - Cradles to Crayons
  - Random Smiles
  - Empty Bowls
  - Franklin Senior Center
- Basketball against Bridgewater High school girls
- Basketball against Foxboro Charter School
- High School Fair-Invited public, private and independent schools invited to show off their school, Invited Franklin district students to attend
- Parent Advisory Council Meeting information, dates of meetings, newsletter information was shared between BFCCPS Parent Advisory Council and Franklin SEPAC on an ongoing basis. We also contract (for a fee) for Extended School Year with the Town of Franklin Special Education Department as needed. We contracted for one student program for one student in June 2007 and one student program for two students in June 2008.
- Assistant Head of School attended the MASS Charter Public School Assoc Delegate Assembly in Worcester
- Our band to Brockton High school to hear open rehearsal of Marine Corp Band
- Director of Fine Arts attended DOE Fine Arts Directors Annual Meeting in Worcester
- Professional Development delivered to 45 Massachusetts Teachers of Mathematics on Data Driven Decision Making and Data Teams

### **26. NCLB Report Card:**

We did not receive any Title 1 funds during the 2007 – 2008 school year.